

CEPTER

Portable Tri-Screen for Laptop

One Cable for Dual Displays



EN

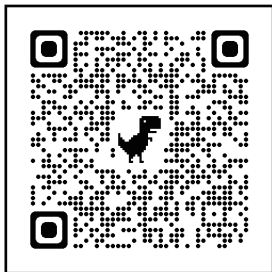
USER GUIDE

CNANO14DUAL

www.ceptertech.com

Scan QR code to installation driver

(If you can't open the driver in the package,
pls scan this QR code to download the driver)

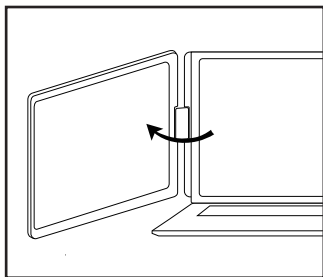


WARNING

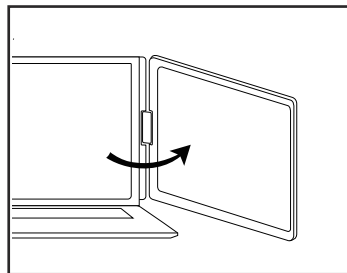
Please handle the Tri-Screen with care and do not press the screens to avoid damage. Do not exceed its maximum turning angel showing as below:

Rotating angle of screens

Left screen (0° - 360°)



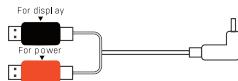
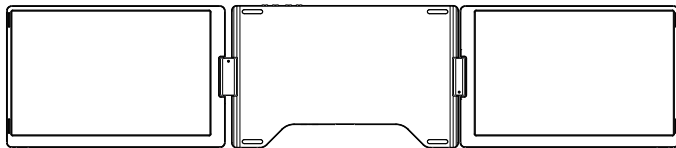
Right screen (0° - 360°)



The Tri-Screen still consumes small amount of power when it's on standby status. For energy saving, waste less and low carbon living style, it's highly recommended to remove cable connections when the Tri-Screen is not in use.

Parts Overview

Tri-Screen



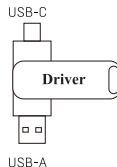
2 USB-A to
USB-C cable

Carry bag

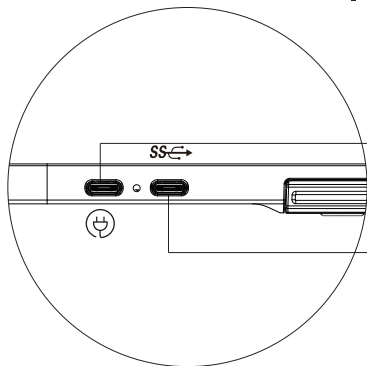


USB-C to
USB-C cable

U disk
(Including driver)



Inputs and Buttons



USB-C PD

(In case of power is required, recommended to use laptop power supply (with Type-C) or PD charger to power the device)



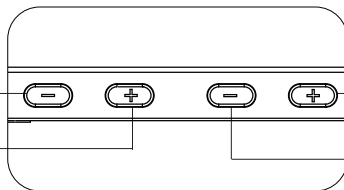
Full functioned USB-C

(To receive various inputs from USB-A or USB-C ports)

Brightness-(Left screen)



Brightness+(Left screen)

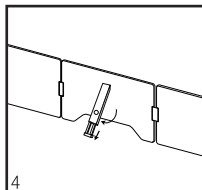
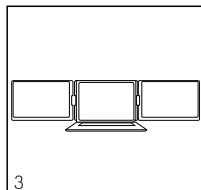
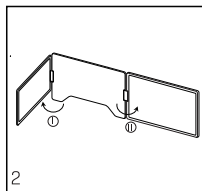
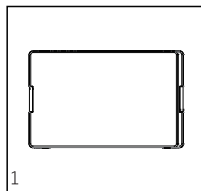


Brightness+(Right screen)

Brightness-(Right screen)

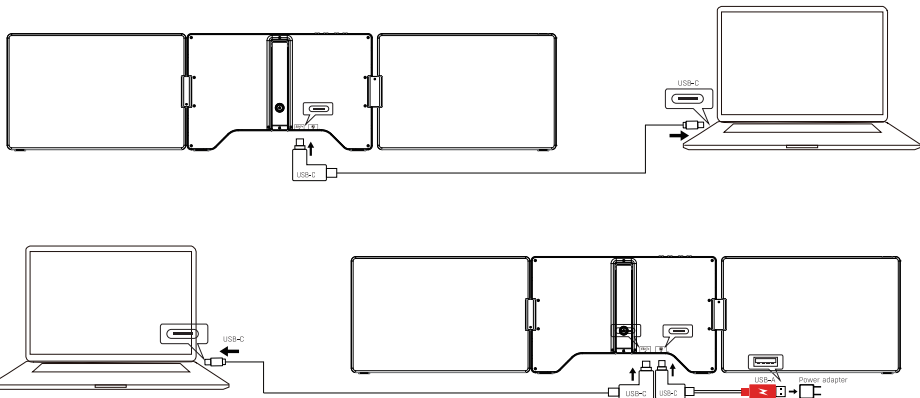
Set It Up

1. Take Tri-screen out of the box.
2. Open the two screens in the directions described in the figure 2.
3. Place the bracket on the table.
4. A stepless adjustable stand is embedded into the back of Tri-screen. Lift the stand, press the button to stretch, and retract the stand. It can offer extra support to the Tri-screen.
5. Using the necessary cables plug one end into the Tri-screen and the other into your laptop. For long term use please plug DC 5V/3A (or PD power) external power adapter or laptop power supply (with Type C).



Connection Methods

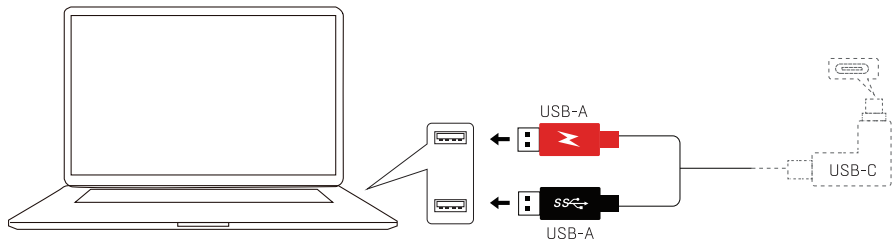
1. Connecting the Tri-screen by USB-C to USB-C cable



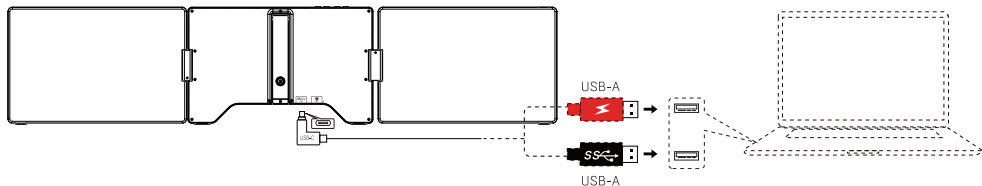
NOTE: After the driver is installed, the Tri-Screen can be powered by one cable as long as the output power is more than 10W. If the output power of the laptop is lower than 10W, external power supply is required for the Tri-Screen.

2. Connecting the Tri-Screen by 2 USB-A to USB-C cable

Step 1: Please connect both USB-A male connectors to laptop or adapter first.



Step 2: Then connect the USB-C male connectors to the Tri-Screen.

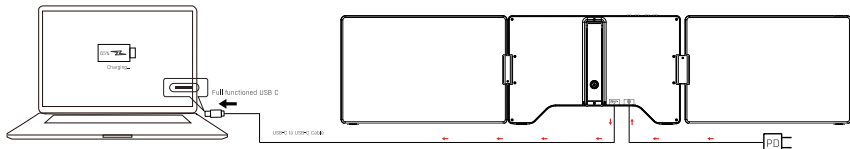


NOTE: After the driver is installed, the Tri-Screen can be powered by one cable as long as the output power is more than 10W. If the output power of the laptop is lower than 10W, external power supply is required for the Tri-Screen.

Other Modes

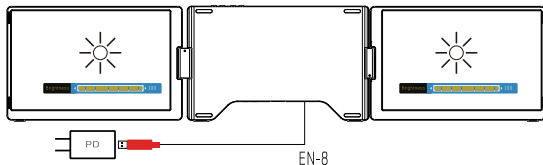
1. Reverse charging mode

When the Tri-Screen is connected with external power source (original power supply of laptop (with Type C)) and the laptop is connected to the Tri-Screen by full functioned USB-C port, the laptop can also be charged by Tri-Screen.



2. Brightening mode

1. Connect the laptop's full functioned USB C port to the device via USB C cable;
2. Connect the laptop power supply to the device (Power USB C port) to realize reverse charging of the laptop and automatically improve the screen brightness. (If your laptop charger is not USB C end, please use another PD charger >45W)



Driver Installation

WINDOWS:



1) Windows 10 or higher versions

The driver will be automatically installed when the tri-screen is connected to your laptop via the USB-C or USB-A cable. Please ensure that your laptop is connected to the internet. After successful installation, restart the laptop to use it. If the driver can't be installed automatically, please install it manually.

2) Other Windows versions






- a. To load the driver, insert the U disk into your laptop. The folder "Drivers" will be displayed on your laptop desktop or in "My Computer (PC)". (Note: Please install the driver to the default folder.)
- b. Open the subfolder and double click the executive drivers and follow the instruction to complete driver installation.
- c. After successful installation, restart the laptop.
- d. Connect tri-screen with laptop then tri-screen is ready to use.

REMARK: Windows 7

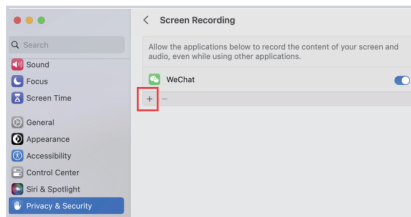
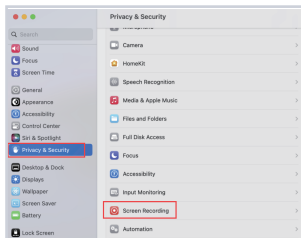
- a. When the Windows 7 driver cannot be installed properly, please operate your laptop as below:
Enter "Control Panel" ----- "System and Security" ----- "Windows update" ----- "Check for updates"
Update to the latest version
- b. Open the "driver" folder and double click the executive drivers and follow the instruction to complete driver installation.
- c. After successful installation, restart the laptop.
- d. Connect tri-screen with laptop then tri-screen is ready to use.



Mac:

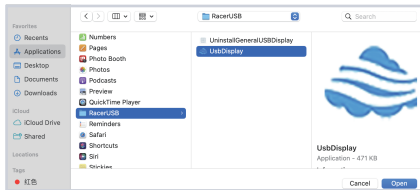
1. To load the driver, insert the U disk into your laptop. The folder "Drivers" will be displayed on your laptop desktop.
2. Open the "Drivers" folder and find the "mac OS" .
3. Enter "System Preferences"  > "Security & Privacy" > "Screen Recording"  > "Unlock" 
(Apple ID and password are required) > "Tick UsbDisplay"  
4. After successful installation, restart the laptop.
5. Connect tri-screen with laptop then tri-screen is ready to use.

Note: When the driver cannot be found, please operate your Macbook as below:



1. Enter "System Preferences"> "Security & Privacy"> "Screen Recording"

2. Click the "+" symbol as shown in the figure to add the driver



3. Click "Applications" > "RacerUSB" > "usbDisplay" > "Open"

4. Follow the steps to add the driver.

5. After successful installation, restart the laptop.

6. Connect tri-screen with laptop then tri-screen is ready to use.



Note: If you can't open the driver in the package, pls scan this QR code to download the driver

EN-11

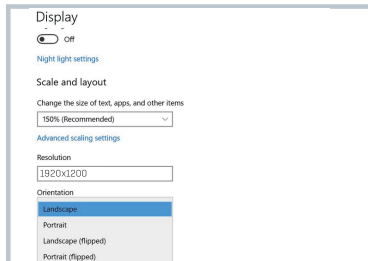
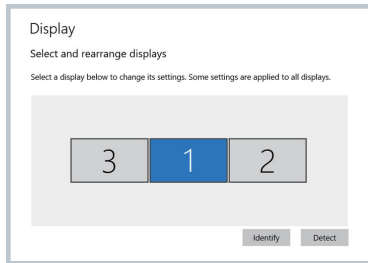


Laptop Display Configuration

PC / WINDOWS


1. Go to your Display Settings(Start  > Settings  > System > Display)
2. Click to "identify", and the corresponding number will appear on each screen;
3. Click and drag the numbered screens to the configuration as shown
4. If two screens appear to be together, such as 2/1, 2/3, etc., please select one of the screen then go to "Multiple Displays menu" to select 'Extend desktop on this display';
5. To increase the zoom, click the "Change the size of text, apps, and other items" dropdown and select 150%, or preferred zoom.

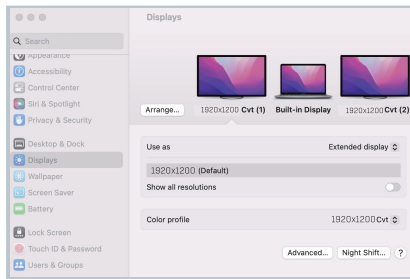
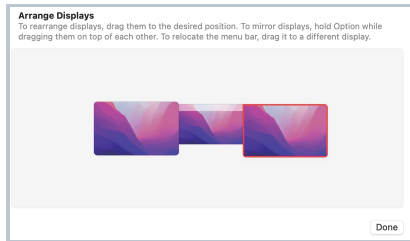
* Keeping three displays sync can be configured in setting of graphic card.
If there is any issue please consult local distributor.



Laptop Display Configuration

MAC

1. Open Displays Settings ( > System Preferences > Displays)
2. Click "Arrangement" from display menu
3. Ensure that the "Mirror Displays" box is unchecked
4. Click each monitor icon and note on which of your screens a red frame appears
5. Click and drag the screen icons so that they are on the same side as the associated screens with a red frame



Tech Specs

DISPLAY

- Two 14 inch (diagonal) 1920*1200, Full HD LCD IPS Panels
- 16:10 aspect ratio
- Adjustable brightness
- Power consumption: 5V 3A

SIZE AND WEIGHT

- Weight: 3.15 pounds/ 1.43 kg
- Depth: 1.11 inch/ 2.82 cm
- Height: 8.54 inch/ 21.7 cm
- Width: 13.62 inch/ 34.6 cm

INPUTS AND CONNECTIVITY

- USB-C Support Video (DP) and Power (PD)
- USB-C Support Power Only

FAQ

Q1: There is a black screen and no display after connection.

1.1 Confirm if the motherboard indicator light is on.

1.2 Check if the two ends of the connecting wire are plugged in place, and confirm if the laptop output power is enough to support the device.

Q2: The screen is not stable, flickers, or has intermittent black screen after connection.

2.1 Please check if the laptop output power is enough to support our device, it is necessary to connect an external power supply (Your laptop USB C charger or DC5V 3A or PD charger) to the device.

Q3: If your laptop doesn't have USB C port, how to use it?

3.1 You can connect the dual USB A-C cable to the laptop's two USB-A ports. The black USB A end connects to transmit data, and the red USB A end connects to transmit power. But if your laptop has only one USB A port, please connect the black USB A end, then you can connect the red USB A end to a charger. Or no need to use the red USB A end, you can connect an external power supply (\geq DC5V3A or your laptop USB C charger or PD charger) to our device directly. Finally, connect the dual USB A-C cable C end to our device.

Q4: There is a boot LOGO, but no display after connecting to Macbook, how to solve it?

4.1 Check if the driver icon is on the top right of the laptop desktop; If it is not displayed, please enter the laptop startup platform to find the driver and click it to solve the problem.

Q5: Can the device charge the laptop when it connects to a power supply?

5.1 Necessary conditions:

1. Laptop's USB C port support power
2. Connect via USB C cable.
3. Power supply is PD protocol.

5.2 Connect way:

1. Connect the laptop's full function USB C port to the device via USB C cable;
2. Connect the laptop power supply to the device (Power USB C port) to realize reverse charging of the laptop and automatically improve the screen brightness. (If your laptop charger is not USB C end, please use another PD charger $>45W$)



This symbol on the product or in the instructions means that your electrical and electronic equipment should be disposed at the end of its life separately from your household waste. There are separate collection, systems for recycling in the EU. For more information, Please contact the local authority or your retailer where you Purchased the product.

Power International AS, PO Box 523, 1471 Lørenskog, Norway

Power Norge:

<https://www.power.no/kundeservice/>

T: 21 00 40 00

Expert Danmark:

<https://www.expert.dk/kundeservice/>

T: 70 70 17 07

Power Danmark:

<https://www.power.dk/kundeservice/>

T: 70 33 80 80

Punkt 1 Danmark:

<https://www.punkt1.dk/kundeservice/>

T: 70 70 17 07

Power Finland:

<https://www.power.fi/tuki/asiakaspalvelu/>

T: 0305 0305

Power Sverige:

<https://www.power.se/kundeservice/>

T: 08 517 66 000

